



Garland **P**ower & **L**ight

Tracking, Reporting, and Auditing All Edits in Your GIS

EMPOWER YOUR QAQC

Common GIS Questions



- How do we view ALL Edits in a version?
- What's the easiest way to verify edits against a work order?
- How do we know the user didn't edit anything else (on the other side of the service territory)?
- Can we QAQC ALL Edits in a version?
- Is there any way to Audit the edits in GIS?
- Who did What, When, and Where?



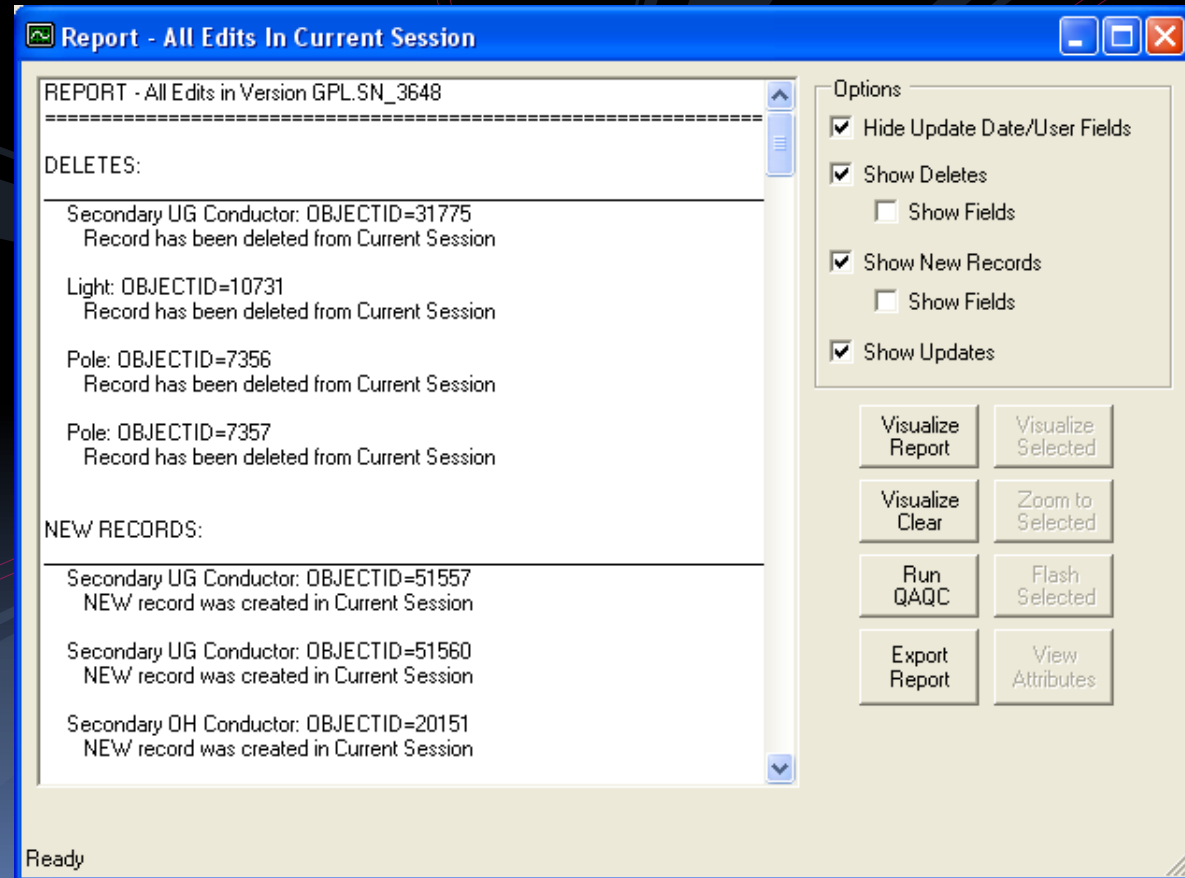
ALL Edits Report & QA Tool

- Total Control and Tracking Capabilities of Edits
 - ESRI Versions
 - TM&M Sessions / Designs
- Interactive Analysis Before Posting
 - Text-based Reports
 - Graphical Representation on the Map
- ALL Edits are Captured:
 - Additions
 - Changes / Updates
 - Deletes



Simple User Interface

- Shows ALL Edits in the Current Version





Text-based Edit Report

- Deletes: Record Type, ObjectId, and all attributes of the deleted record
- Adds: Record Type, ObjectId, and all attributes of the added record
- Updates: Record Type, ObjectId, and list of all fields that changed with the original AND updated values

Options

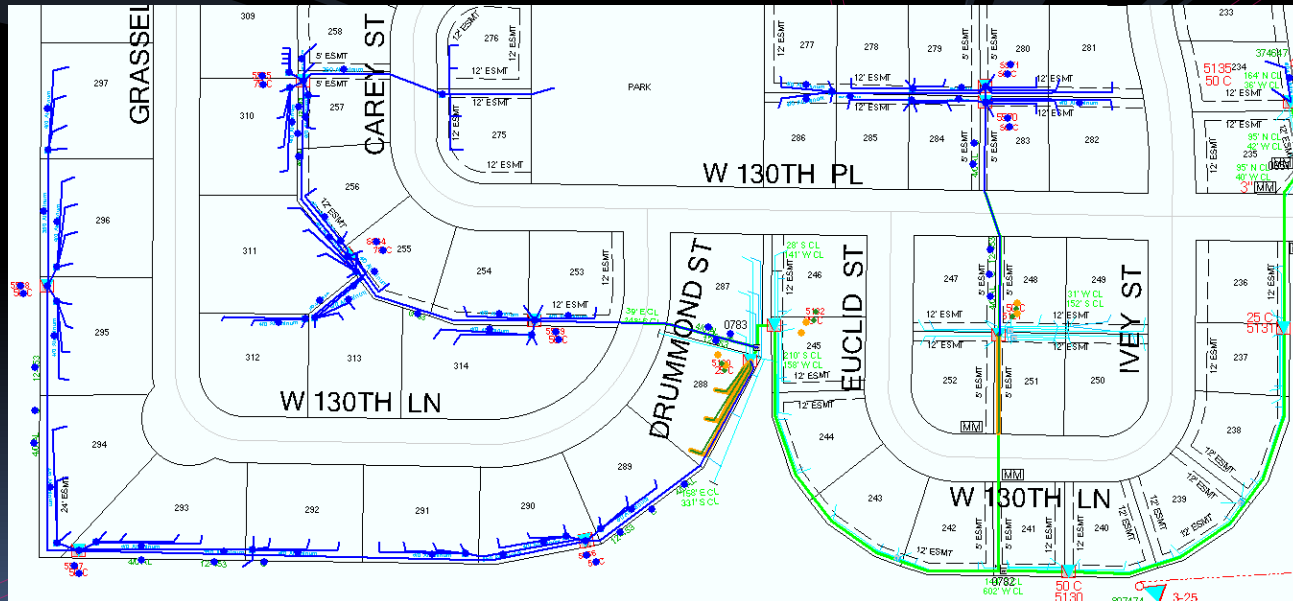
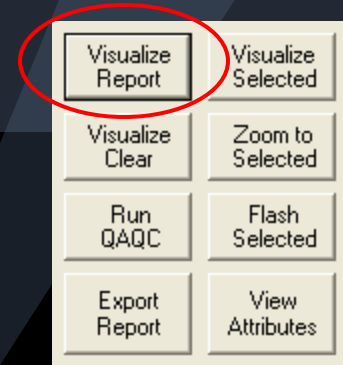
- Hide Update Date/User Fields
- Show Deletes
 - Show Fields
- Show New Records
 - Show Fields
- Show Updates

- Quickly and Effectively Review the Edits
- Toggle the checkboxes to update the report
- Useful when QA'ing against a written WO/SR



Report Visualization

- View the full extent of the edits in the version
 - Additions – Blue
 - Deletions – Red
 - Updates - Green (with Orange showing original geometry)

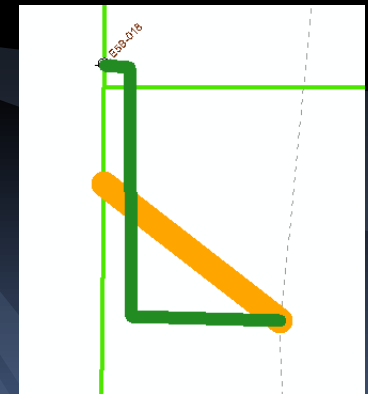
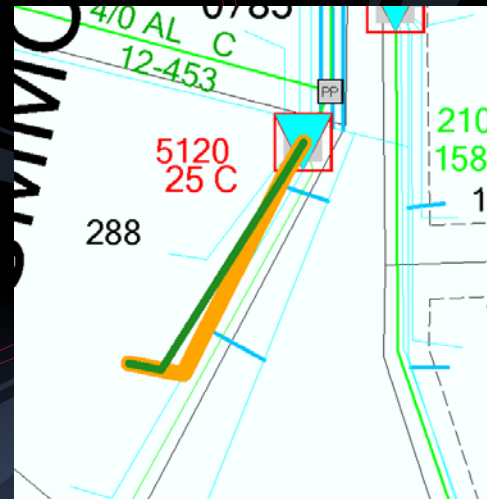
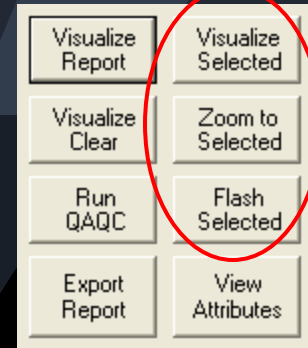


- Allows QA to easily identify edits outside of designated area



Report Visualization

- Select Any Item in the Report to:
 - Zoom to Selected
 - Flash Selected
 - Visualize Selected
 - Visualize Clear





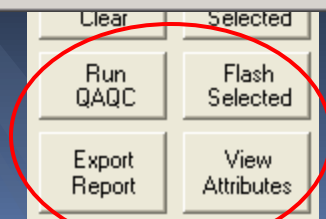
Report QA & Historical Tracking

- View Attributes
 - See changed fields
- Run 3rd Party QAQC
 - ESRI / ArcFM
 - QA All Edited features and objects
- Export Report
 - Text-based Report
 - Named with Version Name and Date
 - Easily Searchable
 - Optionally store in a database

All Edits Report - Attribute Details

Pole Assembly: OBJECTID=41762
Record has been updated in Current Session

Attribute	SDE.Working	sde.DEFAULT	Changed
OBJECTID	41762	41762	
Creation User			
Date Created			
Date Modified	2/23/2009 12:00:00 AM		CHANGED
Last User	lbarnes		CHANGED
Subtype	3	1	CHANGED
Pole ObjectID		16661	CHANGED
Install Date	1/1/1980 12:00:00 AM	1/1/1980 12:00:00 AM	
Quantity	1	1	
Present Status	RETIRED	QAQC	CHANGED
Construction Standard	OH-1105AW	OH-1105AW	
Install SR Number	WO 750322	WO 750322	
RetireDate	2/23/2009 12:00:00 AM		CHANGED
RetireSRNumber	289425		CHANGED
Pole Facility Id	16C-047		CHANGED
Install Job Cost Number			
Retired Pole Id	7885		CHANGED
Retire Job Cost Number	EC-D7531-002-1		CHANGED
GisId	167945	167945	
Customer Pole ObjectID			





AUTO All Edits Report

- To ensure edits are captured for historical and/or audit purposes
- Can be plugged into most Batch Reconcile and Post (BRP) Services
 - TM&M Geodatabase Manager (9.3 rev 2)
 - TM&M BVRP or BRP
 - SSP Innovations BRP
 - Most other Custom BRP Tools built with COM or Microsoft .Net
- Automatically creates an All Edits Report during the Posting process for each version
- Extremely useful for determining edits made in past versions



All Edits Report & QA Tool

- Currently Deployed at 3 Major Utilities
- Demo
 - *Michael Young*
 - GIS Manager
 - Garland Power & Light (Garland, TX)
 - Using the All Edits Report for 18 months





All Edits Report & QA Tool

Questions / More Information

Michael Young
Garland Power & Light

myoung@garlandpower-light.org